

# VERTICAL INNOVATION

The Acoustic Leader in Vertically Folding Retractable Walls









Discover the Skyfold family of products:

Custom built and automatic vertically folding operable walls that unite acoustics, flexibility, design and performance.

All Skyfold systems are:

- Acoustic walls that exceed industry standards
- Space dividers that are self-retracting and sized for each project
- Decorative elements with distinctive, customizable design options

---

# Table of Contents

---

4-5	About Us	44-45	Options
6-15	Zenith Series	46-65	Finishes
16-23	Zenith Premium Series	66-75	Applications
24-33	Classic Series	76-77	Comparison summary
34-43	Mirage	78-89	Dimension charts

< Reilly Pozner – Denver, Colorado USA  
Skyfold Classic™ 51  
Architect / Interior Designers: Gensler

Cover page project:  
Newfield Conference Center – The Woodlands, Texas USA  
Skyfold Classic™ 51  
Architect / Interior Designers: Abel Design Group, Ltd.



# ABOUT US

## Revolutionizing How You Design Spaces

At Skyfold Inc. “we think vertical”: we are the acoustic leader in vertically folding retractable walls. Our walls are more than just space dividers: they are innovative, custom, electric and premium multipurpose space solutions that allow architects, interior designers, contractors and end-users to redefine how a space is used. The easy-to-use, self-retracting system and vertical motion of the wall give users the flexibility to quickly divide or expand spaces. When deployed, Skyfold becomes a two-sided, rigid wall and acoustic barrier with acoustic ratings of up to STC 60 (RW 59) for sound isolation and NRC/SAC of up to 0.65 for noise reduction. When not in use, the Skyfold wall disappears into the ceiling to maximize the floor space.

Our solutions are not just acoustical walls used to reconfigure spaces; they are created to be multipurpose design pieces that live within a space. With a wide selection of finish options that can be mix-and-matched, your Skyfold wall can be customized to complement, and even enhance, your space's design. Our standard white markerboard surface finish further transforms a partition wall into a projection screen and a writing surface that colleagues or students can use to brainstorm and that teachers can use for lecture notes.

We are innovators and leaders in the movable wall industry. All Skyfold walls are expertly made in the manufacturing facility at the Skyfold Headquarters in Montreal, Canada. With thousands of walls installed worldwide, Skyfold is the premium choice for architects, interior designers, and end users.





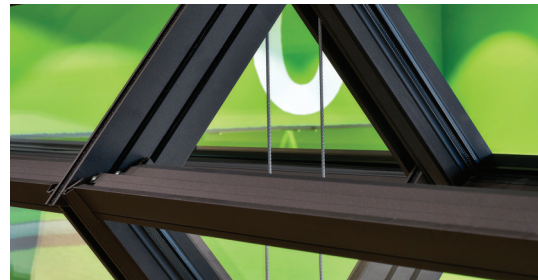


Jackson Healthcare - Atlanta, Georgia USA  
Skyfold Classic 55™  
Architect / Interior Designers: Rule Joy Trammell & Rubio  
Photo credit: Katie Bricker Photography





Arhus Roeselare - Belgium  
Skyfold Skyfold Mirage®  
Architect / Interior Designers: B2A



# Mirage®

The space division solution that does not compromise on an open concept design plan

Mirage® incorporates Skyfold technology with the added luxury of transparency. Clean lines, a lightweight structure, a wide range of glass and plexiglass, solid panels, and ease of maintenance make Mirage the perfect solution for bright, sophisticated and welcoming spaces. In dark and isolated rooms without windows, Skyfold Mirage allows for hallways and windows to lend their light to otherwise isolated spaces.

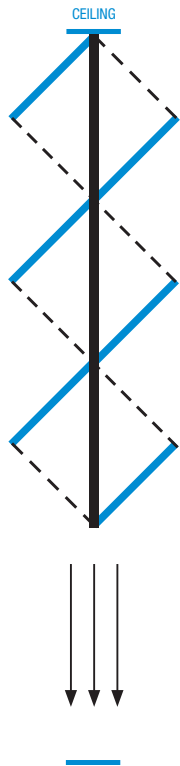






# Mirage®

## ADVANTAGES



- Retracts into the ceiling to conserve floor space
- Acoustic properties
- No floor tracks
- Fully automatic
- Easy-to-use turn-key or keypad operation
- Quiet operation
- Rigid and lightweight
- Variety of glass, plexiglass and solid panel options to meet your design needs
- Equipped with an infrared safety system

### ACOUSTIC PERFORMANCE OF INSTALLED SYSTEMS

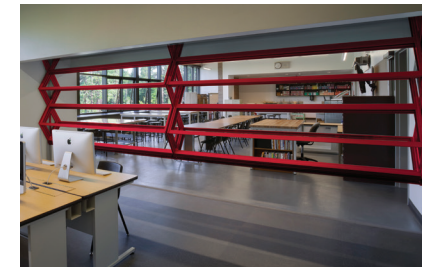
- Mirage: Single laminated glass (STC 33 / RW 33)

### CUSTOM DIMENSIONS

- Width: Unlimited
- Height: Maximum height 24 feet (7.3m)

### FINISHES

- Glass available in a variety of finishes, including Plexiglass, Lexan®, Bullet-Proof Glass, Frosted Glass.
- Frame colors: Endless options to enhance your design









# Mirage®



Grays Harbor College STEM - Aberdeen, Washington USA  
Skyfold Mirage ®  
Architect / Interior Designers: SRG Partnership



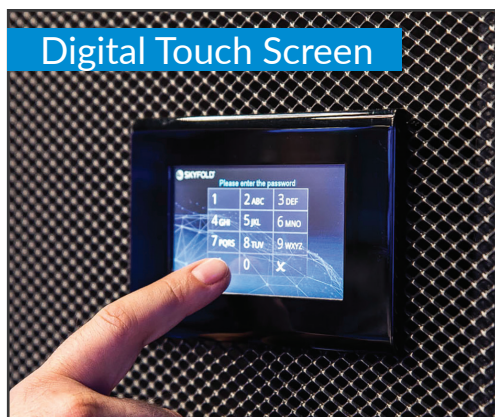
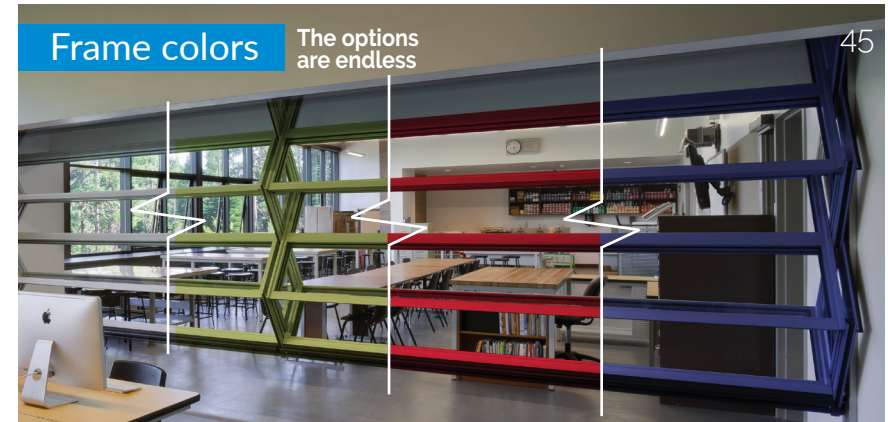




## • Available Options

	Zenith	Zenith Premium	Classic	Mirage
Key/Button Control	●	●	●	●
Digital Touch Screen	●	Included	●	●
LED Lighting	●	●	●	
Seal colors	●	●	●	
Frame colors				●





**LED Lighting:** Available on all models except for the Mirage glass model. Available in two bezel shapes that surround the frosted glass lens. Available in neutral white (4000K) and warm white (2800K).

**Digital Touch Screen:** Simple to use. Backlit 10-key keypad. Multilingual capabilities. 4-digit programmable user PIN. Real-time on-screen communication display. 2 digital keypads included. Connection to optional LED lighting with dimming feature available. Available on all Skyfold models!

**Key/Button Control:** Easy to use Turn-Key operation. With a simple push button operation, a room can be quickly and quietly reconfigured to provide the user with tremendous space flexibility. There is no longer any need for manual intervention to position the wall in order to change a room's configuration.

**Acoustic seals:** Available in white or black. Available on all models except for the Mirage. White seals not available on Zenith 48.

**Frame colors:** Standard and custom colors available. Available on Mirage glass model only.



# Applications

Workspace | Education | Hospitality |  
Healthcare | Convention Center

Specialty Applications

Stepped and Sloped Walls | Intersecting Walls | Egress







# Workspace

In an open concept office setup, employees have ample space to collaborate with colleagues, but are sometimes faced with noise distractions and a lack of privacy. Skyfold's acoustic flexible space solutions in offices worldwide present the ideal balance by creating multipurpose spaces that can be quickly divided while maintaining noise control and a sense of community.



A. Borden Ladner Gervais - Vancouver, BC Canada  
Skyfold Classic™  
Architect / Interior Designers: HOK - Vancouver.



B. KPMG Vaughan Metropolitan Centre- Toronto, Ont Canada  
Skyfold Zenith® 51  
Architect / Interior Designers: Gensler

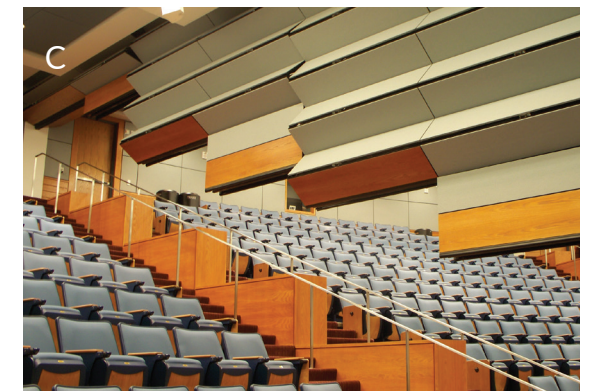


C. Stadsbader - Harelbeke, Belgium  
Skyfold Classic™ 51  
Architect / Interior Designers: Bureau d'Hondt



# Education

Schools are faced with a growing student population with a limited square footage. Skyfold's acoustic flexible space solutions allow schools to get creative with how they manage their space all while providing noise control so that students can focus on their studies.



A. South Lake Tahoe High School- California USA  
Skyfold Mirage®  
Architect / Interior Designers: LPA

B. University of West Georgia Biology Building  
Skyfold Zenith® 55  
Architect / Interior Designers: Cooper Carry

C. Texas A&M University Mitchell Physics Building  
Skyfold Classic™ 51  
Architect / Interior Designers: Michael Graves & Associates



# Hospitality

When square footage and revenue are intertwined, you need to ensure that every inch of a client's space is used to the fullest. At a touch of a button, the Skyfold wall unfolds from the ceiling to transform your space in a matter minutes without any manual labor.



A. Andaz Hotel – Rocher District, Singapore  
Skyfold Classic™ 55  
Architect / Interior Designers: AFISO



B. Martin's Valley Mansion - Hunt Valley, Maryland USA  
Skyfold Classic™ 51  
Architect / Interior Designers: Levin/Brown & Associates



C. The Berkeley Hotel–London, England, UK  
Skyfold Classic™ 55  
Architect / Interior Designers: Heah & Co.



# Healthcare

Healthcare is constantly adapting to changes impacting the patients it serves. Skyfold walls are innovative and premium multipurpose space solutions that allow architects, interior designers, contractors and end-users to redefine how a space is used.



A. University of New Mexico – Health Science Center –  
Albuquerque, New Mexico USA  
Skyfold Classic™ 55  
Architect / Interior Designers: Dekker Perich Sabatini

B. University of California San Francisco MSB  
Anatomy Lab – USA  
Skyfold Classic™ 51  
Architect / Interior Designers: Harley Ellis Devereaux

C. Jackson Healthcare – Atlanta, Georgia USA  
Skyfold Classic™ 55  
Architect / Interior Designers: Rule Joy Trammell & Rubio



# Convention Centers

With operable walls that go up to 36 ft. and that are unlimited in width, Skyfold provides acoustic and automated flexible space solutions for your exposition spaces. A multi-wall acoustic configuration gives you the opportunity to generate even more revenue as events can occur simultaneously without disruption.



A. Walter E Washington Convention Center – DC USA  
Skyfold Classic™ 51  
Architect / Interior Designers: Group Goetz Architects



B. OCEC - Oman Conference & Exhibition Centre  
Skyfold Classic™ 51  
Architect / Interior Designers: WATG-London & SSH Inter'l-Muscat  
255.9' long and 26.41' high (78m and 8.05m)



C. Swedish Gothia Towers – Gothenburg, Sweden  
Skyfold Classic™ 55  
Architect / Interior Designers: Abako Arkitektkontor



# Stepped & Sloped

Skyfold's automated vertically folding retractable walls are ideal for almost any space in an educational facility. Find Skyfold in stepped or sloped auditoriums for team meets, seminars or presentations. Skyfold provides acoustic and automated flexible space solutions for your auditorium spaces.



A. UKCMRI The Francis Crick Institute – London, England UK  
Skyfold Classic™ 60  
Architect / Interior Designers: HOK

B. OHSU - Oregon Health & Science University -  
Collaborative Life Science Building – Portland, Oregon USA  
Skyfold Classic™ 51  
Architect / Interior Designers: Sera & Co. Architects

C. Training Center in NYC - College Point, New York USA  
Skyfold Classic™ 55  
Architect / Interior Designers: Perkins & Will



# Intersecting wall

A multi-wall acoustic configuration gives you the opportunity to generate even more revenue as events can occur simultaneously without disruption. And, with options to intersect Skyfold walls at 90°, T- and L-angles, the floor plan configurations are endless.



A. Johnson Student Center – Santa Ana, California, USA  
Skyfold Classic 55™  
Architect / Interior Designers: HPI Hill Partnership Inc.

B. DTE Mt Clemens – Mt. Clemens, Michigan, USA  
Skyfold Mirage® & Skyfold Classic™ 51  
Architect / Interior Designers: Tetra Tech

C. Cambridge Bio Genetics Office – Cambridge, Massachusetts, USA  
Skyfold Classic™ 51  
Architect / Interior Designers: Jacobs Engineering



# Product Line

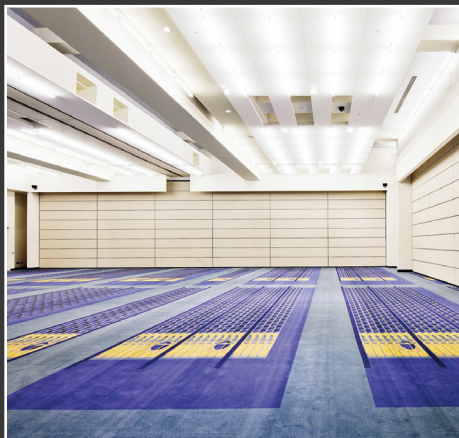
## COMPARISON SUMMARY



Zenith® Premium Series



Zenith® Series



Classic™ Series



Mirage®

### SKYFOLD ZENITH SERIES

	Model 48	Model 51	Model 55	Model 60	Model NRC
<b>TECHNICAL (IMPERIAL)</b>					
STC (System)	48	51	55	60	50
STC (Panel)	57	61	61	66	60
NRC (System)	-	-	-	-	Up to 0.65
Max Height (ft.)	12	12	12	12	12
Max Length (ft.)	48	Unlimited	Unlimited	Unlimited	Unlimited
Weight (lbs/sq.ft.)	6	6.2	6.8	8.6	6.5
Available Finishes	Limited <sup>(3)</sup>	Various <sup>(1)</sup>	Various <sup>(1)</sup>	Various <sup>(1)</sup>	Fabric only <sup>(4)</sup>
Ceiling space required for storage (ft.) - (approx.)	2'-0" to 2'-8.25"	2'-0" to 2'-8.25"	2'-0" to 2'-8.25"	2'-0" to 2'-8.25"	2'-0" to 2'-8.25"
Pocket Width (ft.) - (approx.)	55" to 63.5"	55" to 63.5"	55" to 63.5"	55" to 63.5"	55" to 63.5"
<b>TECHNICAL (METRIC)</b>					
RW (System)	47	51	54	59	49
RW (Panel)	55	60	60	64	58
SAC (System)	-	-	-	-	Up to 0.65
Max Height (mm)	3,660	3,660	3,660	3,660	3,660
Max Length (mm)	14,600	Unlimited	Unlimited	Unlimited	Unlimited
Weight (kg/m <sup>2</sup> )	29.3	30.4	33.3	42	32.8
Available Finishes	Limited <sup>(3)</sup>	Various <sup>(1)</sup>	Various <sup>(1)</sup>	Various <sup>(1)</sup>	Fabric only <sup>(4)</sup>
Ceiling space required for storage (mm) -	615 to 820	615 to 820	615 to 820	615 to 820	615 to 820
Pocket Width (mm) - (approx.)	1,400 to 1,615	1,400 to 1,615	1,400 to 1,615	1,400 to 1,615	1,400 to 1,615
<b>ADDITIONAL FEATURES</b>					
Auto-reverse	Y	Y	Y	Y	Y
Floor track	N	N	N	N	N
Wall tracks	N	N	N	N	N
Obstruction Safety Sensor	Y	Y	Y	Y	Y
Infrared Sensor	N	N	N	N	N
Back-Up Operation	Y	Y	Y	Y	Y
Pocket Closure	N	N	N	N	N
<b>AVAILABLE OPTIONS</b>					
10-year parts warranty	Y	Y	Y	Y	Y
Digital Touch Screen	Y	Y	Y	Y	Y
LED Lighting	Y	Y	Y	Y	Y



## Mirage Typical Dimensions Chart

### IMPERIAL

CEILING HEIGHT "A"	*BEAM HEIGHT "B"	TOP OF POCKET "C"	POCKET HEIGHT "D"	POCKET WIDTH "E"	GRID HEIGHT "F"	NUMBER OF PANELS HIGH
8' - 0"	11' - 2"	10' - 1 3/8"	25 3/8"	43 3/8"	19 3/16"	6 Panels High
9' - 0"	12' - 2"	11' - 1 3/8"	25 3/8"	47 3/8"	21 3/16"	
10' - 0"	13' - 2"	12' - 1 3/8"	25 3/8"	51 3/8"	23 3/16"	
11' - 0"	14' - 2"	13' - 1 3/8"	25 3/8"	55 3/8"	25 3/16"	
11' - 3"	14' - 5"	13' - 4 3/8"	25 3/8"	56 3/8"	25 11/16"	
11' - 4"	14' - 11"	13' - 10 1/4"	30 1/4"	45"	20"	8 Panels High
12' - 0"	15' - 7"	14' - 6 1/4"	30 1/4"	47"	21"	
13' - 0"	16' - 7"	15' - 6 1/4"	30 1/4"	50"	22 1/2"	
14' - 0"	17' - 7"	16' - 6 1/4"	30 1/4"	53"	24"	
15' - 0"	18' - 7"	17' - 6 1/4"	30 1/4"	56"	25 1/2"	
15' - 1 1/2"	18' - 8 1/2"	17' - 7 3/4"	30 1/4"	56 3/8"	25 11/16"	
15' - 2"	19' - 5"	18' - 2 5/8"	36 5/8"	49 3/8"	21 3/16"	10 Panels High
16' - 0"	20' - 3"	19' - 0 5/8"	36 5/8"	51 3/8"	22 3/16"	
17' - 0"	21' - 3"	20' - 0 1/2"	36 1/2"	53 3/4"	23 3/8"	
18' - 0"	22' - 4"	21' - 1 5/8"	37 5/8"	56 3/8"	24 11/16"	
18' - 10"	23' - 2"	21' - 11 5/8"	37 5/8"	58 3/8"	25 11/16"	
18' - 11"	23' - 8"	22' - 5 1/4"	42 1/4"	50 3/4"	21 7/8"	12 Panels High
19' - 0"	23' - 9"	22' - 6 3/4"	42 3/4"	51"	22"	
20' - 0"	24' - 9"	23' - 6 3/4"	42 3/4"	53"	23"	
21' - 0"	25' - 9"	24' - 6 3/4"	42 3/4"	55"	24"	
22' - 0"	26' - 9"	25' - 6 3/4"	42 3/4"	57"	25"	
23' - 0"	27' - 9"	26' - 6 3/4"	42 3/4"	59"	26"	
24' - 0"	28' - 9"	27' - 6 3/4"	42 3/4"	61"	27"	

\* Beam heights indicated may vary with wall size and motor size.

This table is not for construction purposes. Refer to shop drawings for final build to dimensions.

### METRIC

CEILING HEIGHT "A"	*BEAM HEIGHT "B"	TOP OF POCKET "C"	POCKET HEIGHT "D"	POCKET WIDTH "E"	GRID HEIGHT "F"	NUMBER OF PANELS HIGH
2440	3405	3085	645	1105	487	6 Panels High
2745	3710	3390	645	1205	538	
3050	4015	3695	645	1305	589	
3350	4320	3995	645	1410	640	
3430	4395	4075	645	1435	653	
3455	4550	4225	770	1145	508	8 Panels High
3660	4750	4430	770	1195	533	
3960	5055	4730	770	1270	572	
4265	5360	5035	770	1350	610	
4570	5665	5340	770	1425	648	
4610	5705	5380	770	1435	653	
4625	5920	5555	930	1255	538	10 Panels High
4875	6175	5805	930	1305	564	
5185	6480	6115	930	1365	594	
5490	6810	6445	955	1435	627	
5740	7065	6700	960	1485	652	
5770	7215	6840	1070	1290	556	12 Panels High
5795	7240	6880	1085	1295	559	
6100	7545	7185	1085	1350	584	
6405	7850	7490	1085	1400	610	
6710	8155	7795	1085	1450	635	
7015	8460	8100	1085	1500	660	
7315	8765	8405	1090	1550	686	

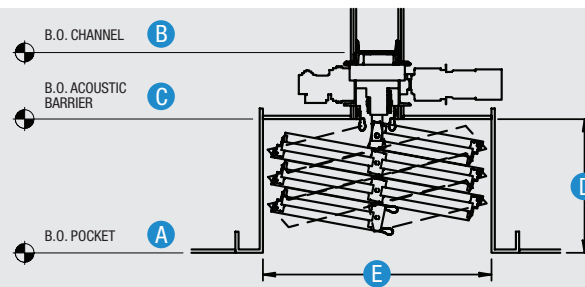
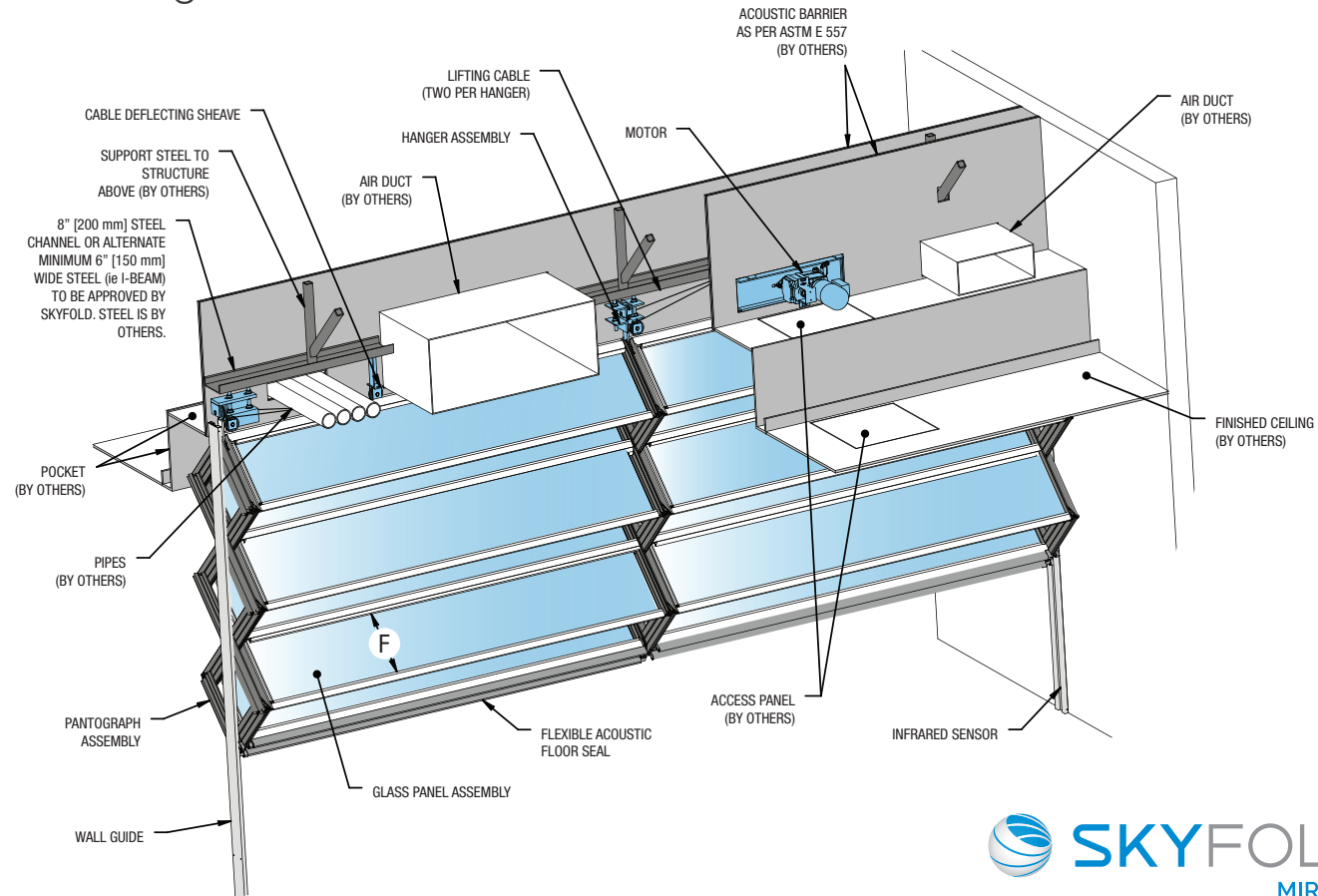
\* Beam heights indicated may vary with wall size and motor size.

This table is not for construction purposes. Refer to shop drawings for final build to dimensions.



# Mirage Technical Drawing

89







For more information visit our website or contact us directly.

**MAIN OFFICE**

325 Lee Avenue  
Montreal, Quebec  
CANADA H9X 3S3

T +1 (514) 457-4767  
F +1 (514) 457-7111  
info@skyfold.com  
[www.skyfold.com](http://www.skyfold.com)



EOI/2021

Recycled materials: Up to 97%  
Post-consumer: Up to 27%  
Pre-consumer: Up to 51%

SKYFOLD®, SKYFOLD® Classic™, SKYFOLD Zenith® and SKYFOLD Mirage® are registered trademarks of Skyfold Inc. and Skyfold Investments Ltd.

Skyfold is pleased to be an official member of the U.S. Green Building Council. The Green Council is committed to promoting better designed buildings that are not only more environmentally and socially responsible, but also help improve the quality of life for those who occupy them and the communities in which they are built. The Council has developed a benchmarking system known as LEED (Leadership in Energy & Environmental Design). When it comes to recycled materials, architects and owners who choose a Skyfold vertically folding operable wall system can calculate the following toward LEED accreditation on their projects. In order to continue protecting our environment, it is essential that we all do our part by using recycled materials whenever possible. Skyfold is proud to help.