



World Home Depot
C O R P O R A T I O N


From start to finish,
**Your Construction
Solutions Specialist**


MAIN OFFICE


20 Fortune Avenue corner Santan Street
Brgy. Fortune, Marikina City, PH 1809
Phone: +63 (2) 8790-1000
Email: info@worldhomedepot.com

DAVAO OFFICE

Unit 1&2 Tristar Warehouse, KM 11 Brgy.
Communal Diversion Road, Davao City, PH 8000
Phone: +63 (82) 234-0911
Email: info.davao@worldhomedepot.com

 www.worldhomedepot.com

 WorldHomeDepot

 WorldHomeDepot

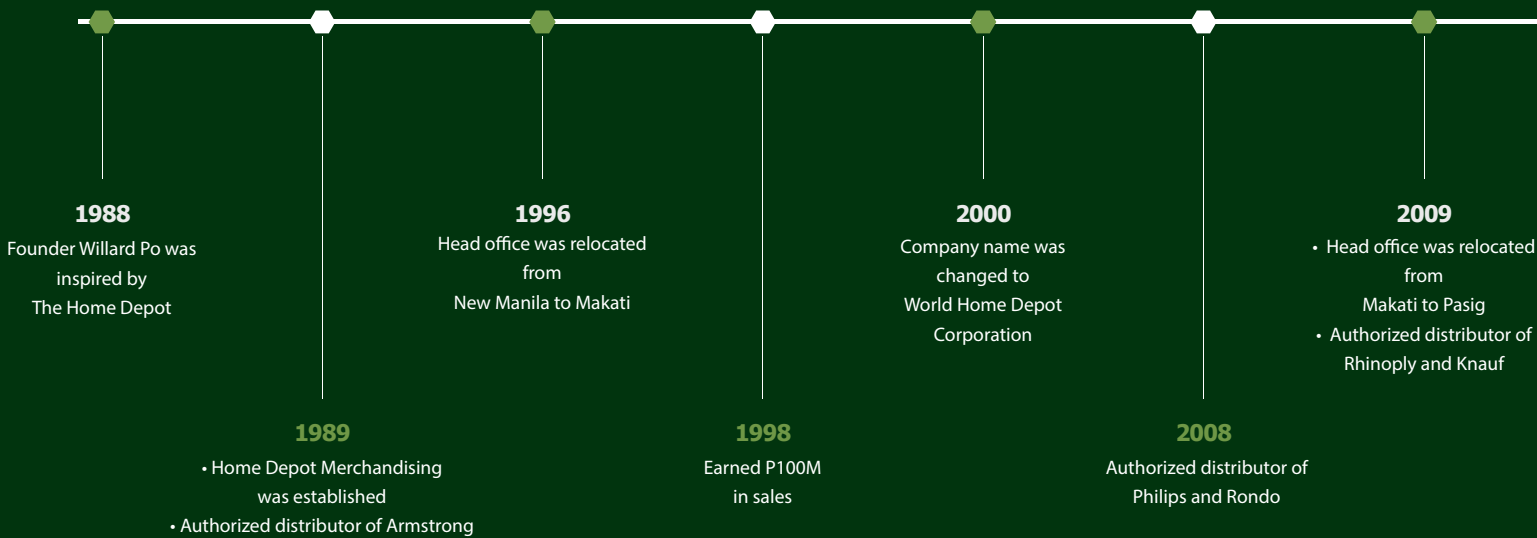




COMPANY HISTORY

Since its establishment in 1989, World Home Depot Corporation has been a reliable source of comprehensive construction and finishing materials for the Philippine construction industry's finest contractors and developers. Our company was founded with humble beginnings and a grand vision to become a leading distributor of high-quality finishing construction materials in the Philippines. For over three decades, we have continuously experienced growth and development in our products, business models and employees. Today, with our founder and CEO at the helm, we have secured our position as an industry leader and stand proudly among the top importers and distributors of structural and architectural assemblies in the Philippine construction industry. World Home Depot Corporation takes great pride in being your construction supply specialist from start to finish.

MILESTONES



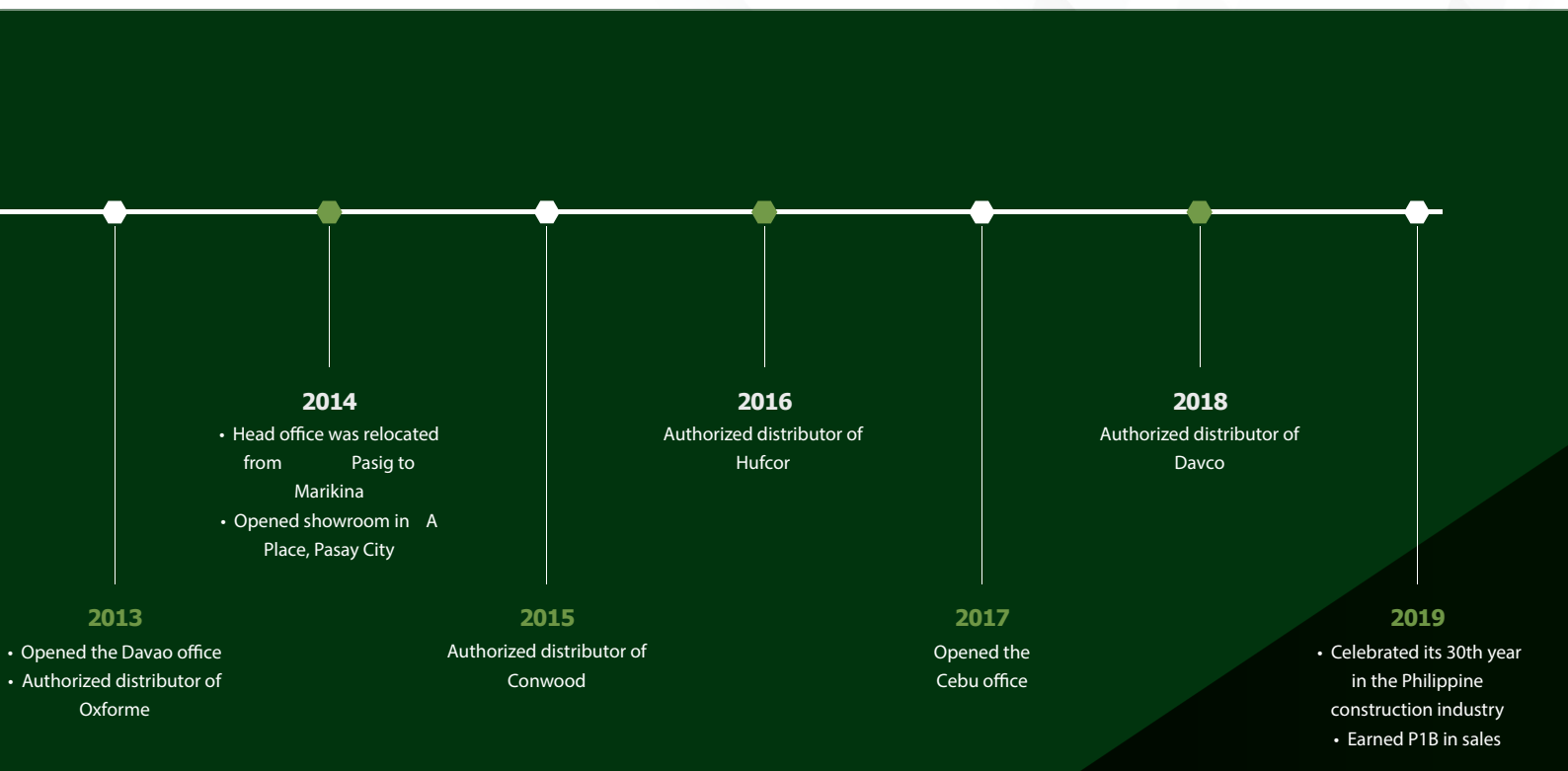
MISSION

World Home Depot Corporation is committed to the reliable delivery of time-proven, high-quality products and materials imported directly from manufacturers. To meet the ever-evolving needs and demands of the local market, we continuously develop and introduce new systems, products and solutions that are simultaneously superior and affordable. We strive not only to serve our growing list of valued clients nationwide but also to support the Philippine construction industry as a whole.



AFFILIATIONS AND PARTNERSHIP

World Home Depot Corporation partners with esteemed organizations in construction, real estate, mass housing, government, and business process outsourcing to further advance the development of infrastructure in the Philippines. Our company advocates Green Building principles, and promotes the use of sustainable building materials to create healthy and livable spaces. We also strive to make a tangible positive impact by giving back to our community and achieving our corporate social responsibility goals.



VISION

World Home Depot Corporation aims to be the Philippines' number one provider of high-quality construction materials and services.



OUR ORGANIZATION

Sales

Our Sales Team aims to generate revenue and make professional connections by being the direct point of contact for customers, and providing excellent customer service before, during and after sales. Our Sales Engineers are qualified personnel with engineering or construction backgrounds and experience which allows them to educate customers about our different products and services. They contribute to the business growth by identifying prospective clients, building relationships, converting sales and maintaining loyal customers.

Technical

Our team of Technical Engineers provides expertise in organizing and designing systems and solutions to maximize the utility of the products and the space involved. Their engineering experience connects the gap between specifications and requirements, and spans all aspects of technical support from preparing estimates to site inspections. In research and development, our Technical Engineers are keep in product and system innovations. Their testing and analysis help develop better construction solutions in all areas of a project.

Marketing

Our Marketing team collaborates closely with our Sales Team and Business Department Group to convey brand value and awareness. The team focuses on customer and market research with an emphasis on defining opportunities for product growth. They are in charge of the company's engagement in public forums and maximizing our media presence in the Philippine construction industry.

Operations

Our Operations Team consists of the Purchasing and Distribution Teams that are essential to the in-flow and out-flow of products from our manufacturers to our customers. Our Purchasing Team provides expertise in negotiation and import regulations to procure the best terms and pricing for the products that World Home Depot Corporation carries. They also collaborate with other departments to transform the product line with innovations and research of potential vendors to provide quality products for distribution. Our Distribution Team, in turn, is in charge of the timely and accurate deliveries of our products to our customers as well as maintaining a clean and organized warehouse. Deliveries and warehousing are done in a precise manner to maximize space and routing, maintain product security and operate a safe fabrication area for specialized products.

Human Resources and Administration

Our Human Resources and Administration Department (HRAD) is the center of our company culture. The team is responsible for the routine facets of human resources such as recruitment and hiring, training and development, and managing employee benefits and relations. It also encompasses a larger scale of instilling the company culture and best practices through administrative services that cover the employees, employer, third-party concerns, legal matters and government institutions.

Finance

Our Finance Department covers all manner of bookkeeping and management of the company's financials. Comprised of several teams, the Finance Department controls the treasury, organizes cash flow, and manages the credit risk, budgets and forecasts to help make sound decisions for the company's overall financial health. They coordinate closely with external auditors to ensure the accurate reporting and analysis of company figures.

Business Development

Our Business Development Group seeks to bring in business from both ends of the spectrum, from the manufacturers and the clients. It is a group of individuals with in-depth knowledge of the products and the industry. They focus on the research and identification of leads that can grow the business on both sides.



TECHNICAL SERVICES



Free Ceiling, Drywall and Flooring Analysis and Estimates

Assist clients by providing an accurate Bill of Materials.



Design Ideas

Provide design options for Architects, Engineers and Customers.



Technical Documents and Mock-up Samples

Provide technical documents and mock-up samples necessary for project proposals.



Product Presentations

Provide support to Sales and Marketing Group for Product Presentations.



Training and Orientations

Support clients by giving product orientation and training.



Construction Solutions

Assist clients in solving new and recurrent problems arising from ceiling, drywall and flooring design, assembly and maintenance.



PRODUCT PORTFOLIO



RHINOPLY

RHINOPLY is a polypropylene film-coated plywood. What makes it so exceptional, compared to an ordinary phenolic board, is its prolonged wear-resistance and corrosion-resistance. Since it is made of a 0.5mm THK PP plastic-coated surface, its physical and mechanical properties are much higher than those of traditional film-faced plywood.



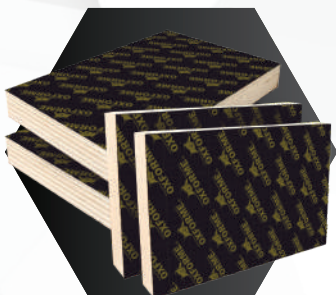
STONEWOOL

STONEWOOL is made of inorganic fibers derived from basalt, a volcanic rock. Advanced manufacturing technology ensures consistent product quality. With high fiber density and low shot content, it is fire-resistant and performs excellently in high temperatures.

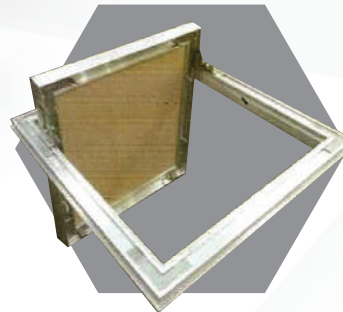


HIGH DENSITY LED
Bright Solutions

An energy-efficient LED panel with bright and uniform lighting.



Oxforme Phenolic Board is a formwork lining engineered to deliver optimum performance for low- to mid-usage requirements. Double Grade AA with ISO and CE Certification, it provides a combination of quality and affordability.



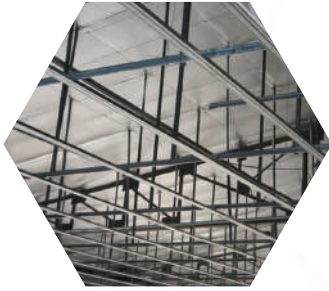
Techno Access Panel is a variation of A series Hinged Door panel fitted with touch locks. Access panel is opened by pushing up th cover at corners on lock side to disengage the locks and the door will drop down.



PRODUCT PORTFOLIO



Yale is one of fifteen brands represented by ASSA ABLOY Door Security Solutions, a North American operating unit of ASSA ABLOY, headquartered in Stockholm, Sweden. ASSA ABLOY is the global leader in door opening solutions, dedicated to satisfying end-user needs for security, safety and convenience.



Light Gauge Steel Framing components for concealed (furring) and exposed (t-runner) ceiling systems, drywall partitions, EIFS, and roof framing. ISO 9001: 2000 certified, true to gauge, and conforms to the Philippine Construction Industry standards.



Sika is a company that develops as well as produces systems and products for bonding, sealing, damping, reinforcing and protecting.



Made from high-quality gypsum board. The acoustical layer on the gypsum board leads to better sound absorption and controlling resonance. The Ready-Mix Joint Compound Special Vinyl formulation requires minimal mixing or thinning to provide a smooth, seamless finish. The Joint Compound is ideal for cornering embedded fasteners, corner beads and skim coating.



Flexboard is manufactured in accordance with the highest product standards and quality control measures. It is made from a homogenous mixture of Portland cement, fiber, cellulose and water. Flexboard does not contain refined silica sand.



PRODUCT PORTFOLIO



Dorma Hüppe is part of the Dormakaba Group and makes up the Movable Walls business unit. Dorma Hüppe is one of the leading providers of high-quality partition systems for hotels, convention centers, office buildings, showrooms, banks, trade fairs, shopping centers, etc. They provide customers around the world with intelligent solutions for efficient space management.



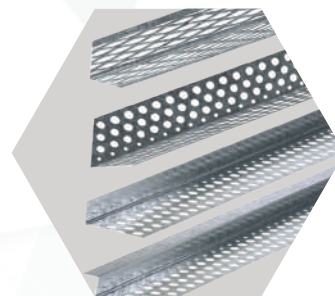
Armstrong Vinyl Flooring is a durable, scratch-stain-chemical resistant flooring material with a wide range of colors and patterns to complement interior designs. It is easy to maintain and install when used with Vinyl Sheet application and its complete floor preparation in welded and seamless connections. It can reduce installation time by almost half.



Knauf's comprehensive range of high-quality wall and ceiling lining products are developed with specific characteristics to enhance performance. They provide fire, water, moisture, acoustic and aesthetic solutions for all construction projects.



Rockwool products are non-combustible, particularly suitable for thermal insulation, fire protection and sound reduction/absorption. It is inorganic and contains no nutritious substances. Mineral wool will not rot and does not attract vermin.



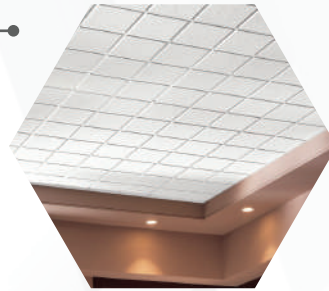
A global manufacturing company that specializes in an extensive range of metal products that formulate systems for the construction industry. Rondo offers a comprehensive design service to assist in all phases, from beginning concepts all the way through to the building completion.



PRODUCT PORTFOLIO



Conwood is a wood replacement product that aims to help save the environment. Conwood Co., Ltd., a subsidiary of Siam City Cement, is one of the leading companies in Thailand. Conwood offers the unique beauty of real wood, ease of usage and longer shelf life.



From sustainable mineral solutions, to durable metal and acoustically optimised wood and wood wool solutions, our shapes, textures and colours inspire sustainable design solutions which also offers sound blocking features to reduce sound transmission to adjoining spaces turning interior spaces into amazing experiences.



Optimo specializes in the production of premium quality construction chemicals such as skimcoats, tile adhesives, rendering repair mortar and decorative finishes through technology and innovation.



Philips Professional Lighting System is the first and only complete professional lighting solution in the country. A combination of superior design expertise, advanced technology and a wide array of products, from lighting design to application.



Fincase is a fissured pattern of ceiling tile that is made of mineral fibers. It has great acoustic performance and sound absorption. Its NRC 0.65 sound-absorbing panel is used to mitigate background noise, and reduce the reverberation and echo in a space.



PROJECTS

World Home Depot Corporation believes that the diverse range of our completed projects is a testament to the top-notch quality of our work and services. Regardless of scale, every single project is handled with the utmost precision and professionalism. Our decades of industry experience and in-depth situational grasp are invaluable tools in any construction project. We are ready to meet the needs and demands of our clients. We are immensely proud of all our contributions to the Philippines' infrastructural progress and economic growth.



Ayala Mall Feliz



The Podium



Bunting Farm



Metro Railway Transit 7



Aqua Boracay



Cultural Center of the Philippines



Hilton Manila



Bohol-Panglao International Airport



Sea Games Athletic Stadium

OUR CLIENTS

World Home Depot Corporation works closely with a wide array of clients nationwide, from small-scale contractors to construction empires, our promise to our clients does not change. We are proud to be their trusted partner, and we are deeply honored that we have been chosen as their preferred provider of high-quality construction materials and services.



The Church of Jesus Christ of Latter Day Saints



Robinsons Magnolia



Rockwell Retail Office



Cognizant Giga Tower



Shangri-La's Mactan Resort & Spa



Providence Hospital



Amanpulo



Shangri-La at the Fort



Royce Hotel

